



Our Staffordshire Care Homes

Life in colour



Contents

*Luxury care in the
beautiful surroundings of Staffordshire*

Quality dementia care in Staffordshire	04
Hen Cloud House	07
Shoemaker Place	13
Your bespoke care plan	19
Fun for every occasion	20
How we care at Borough Care	20
How we live 'Life in Colour'	20
Colour on a plate	20
Colourful activities	20
Notes	23

Quality residential care in Staffordshire

Find sanctuary in our care homes

Personalised care in modern, luxury settings

Our Staffordshire care homes take everything we stand for at Borough Care and elevate it to the next level of luxury.

At their core, both homes offer residents quality care in beautiful surroundings. Not only that, but they also create a unique experience where your loved one can live Life in Colour.

In this brochure, we'll take you through the fantastic care facilities at Hen Cloud House and Shoemaker Place, our Staffordshire care homes. We'll share insights into what it's like living at a Borough Care home and what the families of our residents have to say about their experiences at our homes.

We hope this brochure will help you to decide which home would be best for your loved one.





Hen Cloud House

Outstanding care in the heart of Leek, Staffordshire

Hen Cloud House is our premium care home in Leek that puts luxury living and quality care first.

Our elegant, modern care home is surrounded by landscaped gardens and courtyards, making it the ideal place to relax and embrace the beauty of nature. Outdoors, residents can enjoy a spot of gardening, a calming walk, or bird watching in a peaceful setting. Inside, you'll find a cosy reception café, cinema room, lounge and garden room. There are plenty of luxury features to indulge in at Hen Cloud House, but if there's one place guaranteed to help your loved ones enjoy some TLC, it's the on-site beauty salon.





A snapshot of our facilities:

Stunning landscaped gardens

Peaceful setting

On-site hair and beauty salon

On-site laundry

On-site shop

Reception café area

Weekly activities, games and excursions

Cinema

Garden Room

Parking for 20 vehicles

Excellent road and public transport access

Hear from our families

Review from Daughter of Resident

“I am so impressed with the quality of care at Hen Cloud House. Mum is made to feel so welcome and this makes such a difference. I have visited many care homes and Hen Cloud is by far the best I have seen, beautiful bedrooms and small lounges and very good food.

I can't praise the management and staff enough, so friendly and professional.”

Review from Son of Resident

Staff rolled out the red carpet and provided a welcome pack on arrival. The whole unit looks like a 5-star hotel. All staff are exceptionally friendly and invested in helping my dad. We can visit at any time and are always made welcome. Staff are very knowledgeable regarding his medications and needs. Nothing is too much trouble for them - I wish I could move in!”



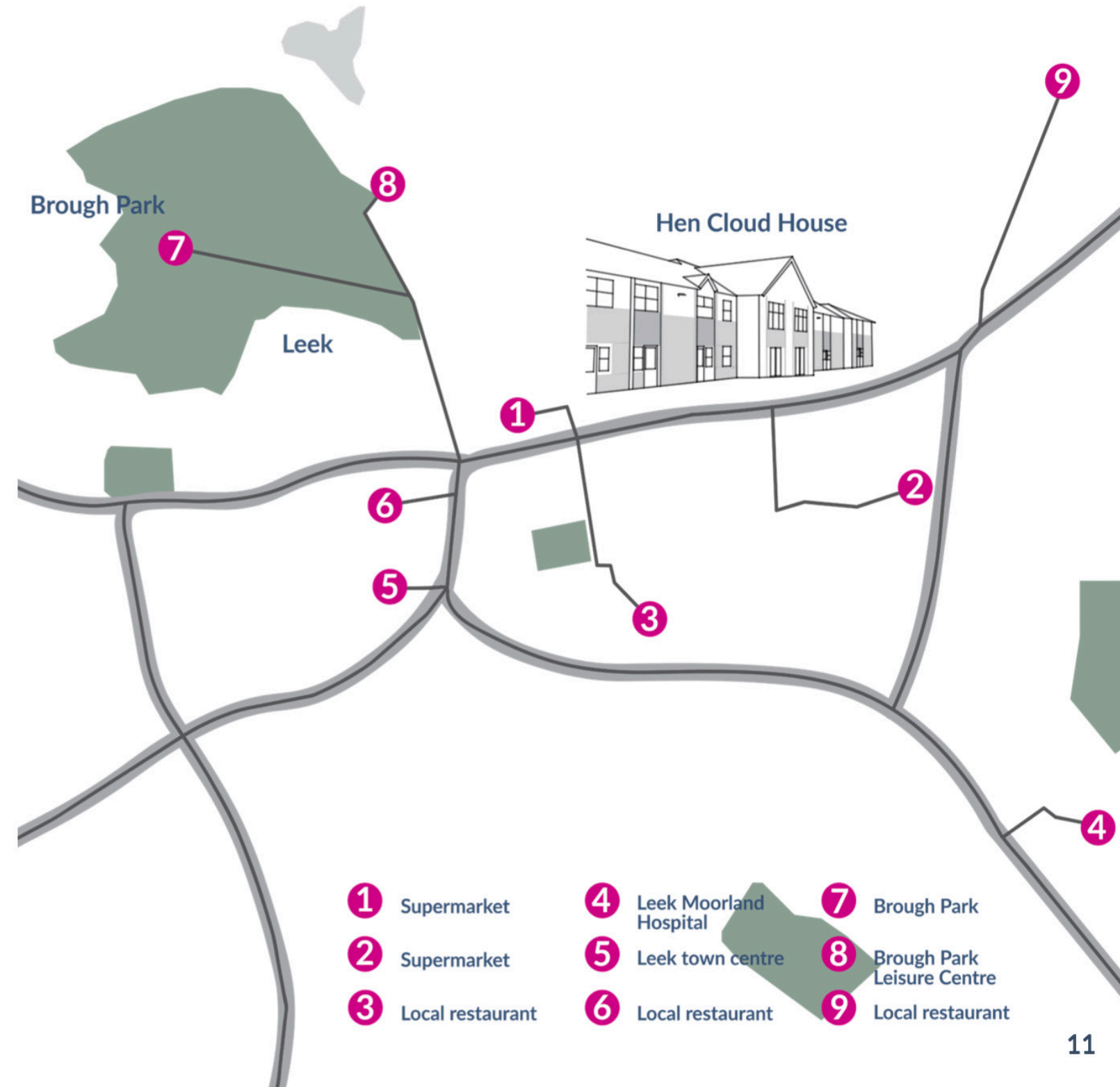
Discover Hen Cloud House

Interested in planning a visit to the home?

If you'd like to find out more about Hen Cloud House, or take a virtual tour, visit our website where you will find our latest Frequently Asked Questions, Care Home Fees and testimonials from our residents, friends and families.

To book a visit; spend time with our residents; talk to staff; and see how we choose to live 'Life in Colour, reach out to our team at hencloudhouse@boroughcare.org.uk or call 01538 712460.

Hen Cloud House
Buxton Road, Leek, Staffordshire
ST13 6EQ



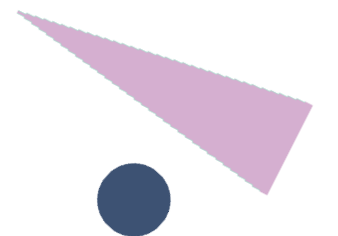


Shoemaker Place

Specialist care set in the stunning surroundings of Stone, Staffordshire

Shoemaker Place is our unique and modern care home set in the beautiful market town of Stone.

Designed with luxury living in mind, Shoemaker Place is the perfect place for your loved ones to get the care they need. Every consideration has been made to ensure that the home is suitable for those with dementia. From the familiarity of the décor to the layout of the care home itself - residents can live full lives in complete comfort.





A snapshot of our facilities:

Beautifully-landscaped gardens

Excellent road & public transport access

Tranquil setting

On-site hair and beauty salon

On-site laundry

On-site shop

Reception café area

Weekly activities, games and excursions

On-site cinema

Garden Room

Parking for 20 vehicles

Hear from our families

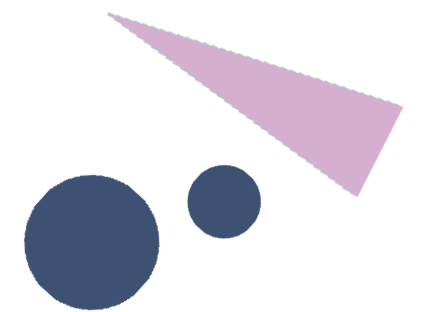
Review from Son of Resident

“Wow! It took a long time to look at care/ nursing homes, and then I found Shoemaker! What a find! My mum was recovering from a double hip replacement and had spent two months in hospital before I knew she needed 24-hour care that I couldn't give!

From her arrival, she was made to feel so welcome and has continued to settle in and adores all the staff who have been looking after her! I can't thank them all enough - she has settled far better than I thought she would, and for the first time in many months, has started to eat properly! She is happier and healthier than I've seen her for a long time, and I just want to say thank you to everyone at Shoemaker Place for making my Mum happy and of course, me!”

Review from Daughter of Resident

“Moving to Shoemaker has been the best move for my dad. From the day he moved in, he was made so welcome, which helped him to settle in - a lot sooner than expected. All the staff at every level are professional, caring, supportive, and so easy to talk to and will always make time for a chat when I visit. I now know that my dad is being well cared for in a setting that is like no other care home I have ever visited.”



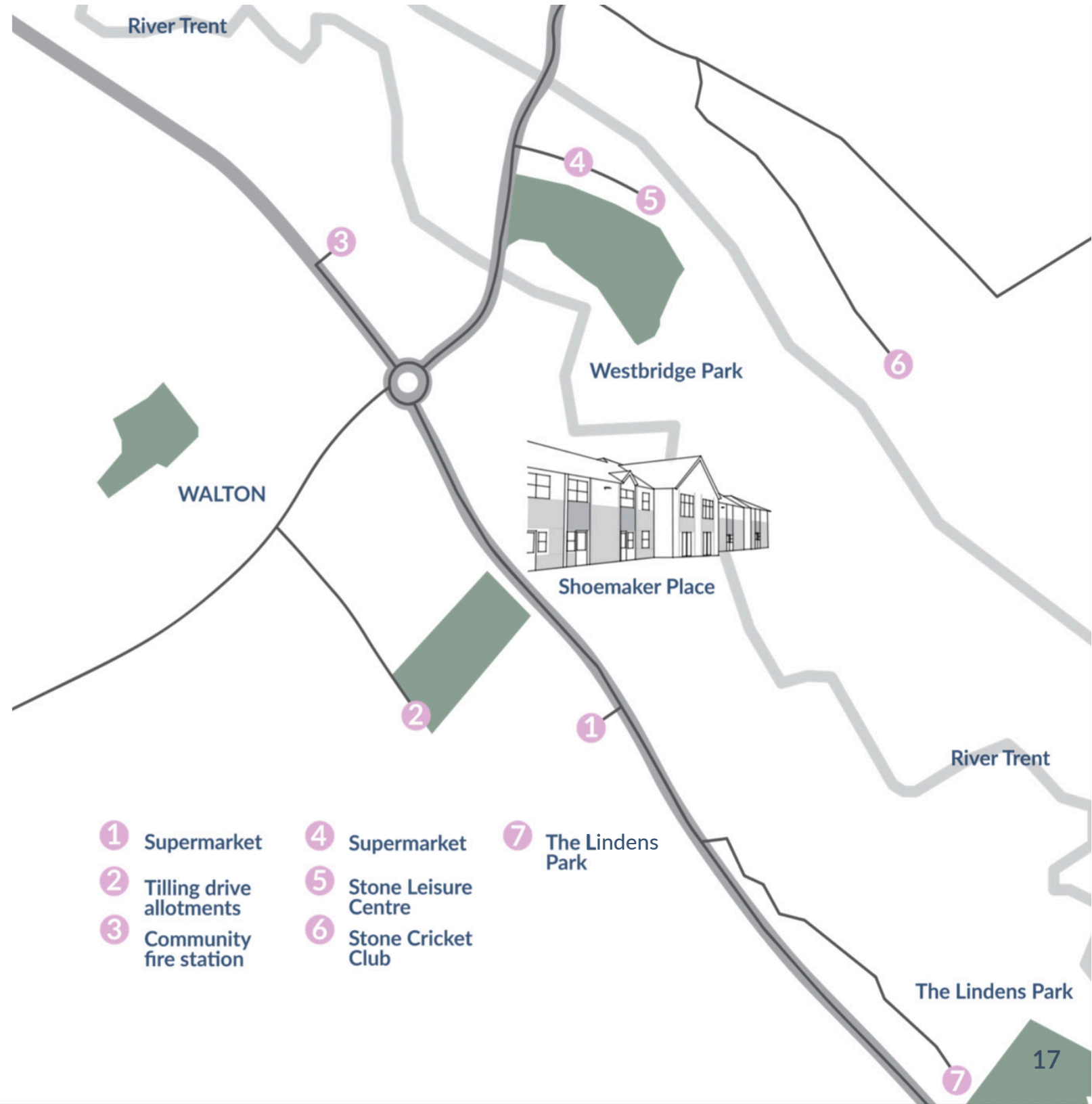
Discover Shoemaker Place

Could this be the perfect home for your loved one?

To find out more about Shoemaker Place, visit our website where you can find our latest Frequently Asked Questions, Care Home Fees and testimonials from our residents, friends and families.

To book a visit; spend time with our residents; talk to staff; and see how we choose to live 'Life in Colour', reach out to our team at shoemakerplace@boroughcare.org.uk or call 01785 553420.

Shoemaker Place
The Fillybrooks,
Stone,
Staffordshire
ST15 0GD





Your bespoke care plan

Personalisation is at the heart of our care, and we do everything to ensure that each resident at Borough Care receives a bespoke care plan to meet their individual needs.

Our Catering Team provides a personalised dining experience tailored to your loved one's dietary requirements. Through our partnerships with V for Life and Apetito, we ensure that there are always delicious, vegetarian and vegan options available at every meal. The home has also been split into smaller households to provide a more personalised, individual care plan to every resident.

Fun for every occasion

Our Staffordshire homes benefit from a full programme of activities organised by our wonderful Activity and Lifestyle Facilitators (ALFs). Residents can enjoy live music, fun day trips out, and even at-home cheese and wine nights!

How we care at Borough Care

Professional personal care for 30 years

Borough Care is one of the largest providers of residential care and dementia services for older people across Staffordshire and Stockport. For 30 years, we've prided ourselves on our exceptional approach to caring for our wonderful residents. We know that no two people are the same, so there can never be one single care solution to suit everyone. Through our specialist dementia and residential care, we offer support that exceeds the unique needs of each resident and their family.

As a not-for-profit organisation, we reinvest any surplus money back into the services we offer. We are committed to providing the highest quality of care, with plenty of opportunities to flourish and have fun along the way. So, you can relax knowing that everything we do is to serve the best interests of our residents and their families.

How we live Life in Colour

Fun and full lives in comfort

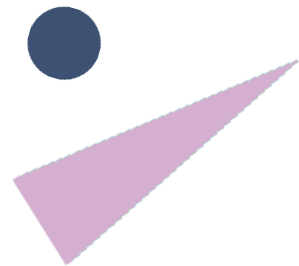
Our mission is to create environments where older people can stay well and live *Life in Colour*. We fundamentally believe that everyone should be encouraged, empowered and supported to live their best possible life, whatever their health or capabilities.

Colour on a plate

Our partnerships with fantastic organisations such as Vegetarian for Life and Apetito help us to ensure that we always offer delicious, nutritious food for all of our residents. It's important that we create spaces where our residents feel supported and empowered to be themselves, and food plays a significant part in that.

Colourful activities

We have strong connections to the local community and people who help extend our range of services. We have regular visits from hairdressers, aromatherapists, nail technicians, masseuses, local faith groups and mobile libraries.



Interested in seeing what
'Life in Colour' looks like at
Borough Care?

Follow us on social media:

Facebook @boroughcarestockport

Twitter @boroughcareltd

Instagram @boroughcare

LinkedIn @boroughcareltd

To find out more about how we care at
Borough Care, visit our website at
www.boroughcare.org.uk or email us
at enquiries@boroughcare.org.uk

Borough Care

Borough Care

*Unit 9, Acorn Business Park, Heaton Lane,
Stockport, Cheshire,
SK4 1AS*